

M MORLEY COLLEGE LONDON



ARTISTS OF MORLEY
2024



M MORLEY GALLERY



A BRUSH WITH PAINT

A Brush with Paint is a group exhibition of contemporary painting from this year's Advanced Painting course, taught by Steve Wright. With its focus on personal development, this display ranges from lyrical landscapes to paintings that seek to capture the multi-sensory experience of specific locations, or that imagine a future where Artificial Intelligence is part of the everyday. What they have in common is the aim to create something meaningful and personal out of a brush loaded with paint.

EXHIBITION DATES:

Friday 7th June – Thursday 27th June

PRIVATE VIEW:

Thursday 6th June 6pm–8pm

BARRY TILL GALLERY, WATERLOO CENTRE



LEARNING DISABILITY PHOTOGRAPHY

An exhibition of work from the weekly class “**Photography for Adults with Learning Disabilities**”, which has run at the Waterloo Centre since September 2023. The students, total beginners, were introduced to photography principles. Articulating and expressing their thought process through images has been a great self esteem booster. This class demonstrates the incredible achievements that are possible when mutual respect and trust flourish within a group.

EXHIBITION DATES:

Monday 10th June – Thursday 31st July

CARDEW SPACE, WATERLOO CENTRE



ORNAMENT | THE DE BEERS GROUP SCHOLARSHIP

Featuring the work of our Level 2 Jewellery Certificate students in preparation for running a professional jewellery business. The goldsmiths have developed their skills and personal style, learning new techniques and gaining confidence in their own artistry.

THE DE BEERS GROUP SCHOLARSHIP

Featuring the work of our De Beers Group scholars Shirley Nelson, Ayesha Sureya, Ella Bonomi and India Lawrence who have been generously funded by the De Beers Group to develop their jewellery skills and businesses.

EXHIBITION DATES:

Friday 14th June - Wednesday 3rd July

PRIVATE VIEW:

Thursday 13th June 6pm-8pm

**BARBARA CHRISTIE CASE,
FOYER GALLERY,
WATERLOO CENTRE**

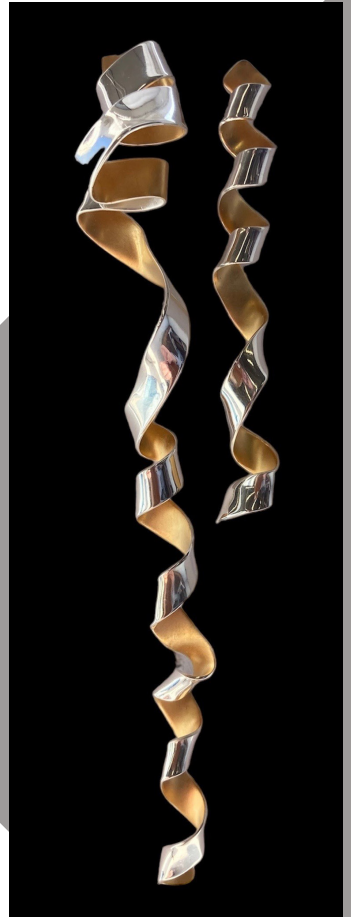


Ayesha Sureya





Shirley Nelson



Lisa Parsons



Emma Lawrence

CERAMICS END OF YEAR



AR SHOW



The culmination of two years' exploration and learning on the Ceramics HND at Morley Waterloo. The work on display ranges from thrown, cast and hand built creations with an imaginative use of materials, decoration and conceptual ideas. This exhibition shows the innovative and highly individual work of our graduating students. In the basement level, we celebrate the exceptional achievements from our HNC Ceramics students and the skills which have developed throughout the year.

EXHIBITION DATES:

Monday 17th June - Saturday 22nd June

PRIVATE VIEW:

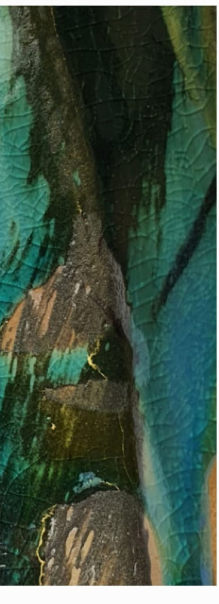
Tuesday 18th June 6pm-8pm

OPENING HOURS:

Monday - Friday 12pm-5pm

Saturday 1pm-5pm

MORLEY GALLERY



EYE & HAND: CERAMICS, GLASS, JEWELLERY AND INTERIOR DESIGN

Welcome to “Eye & Hand,” an exhibition developed by the diverse student body at the North Kensington Centre for Skills. This exhibition invites you to explore the creativity that thrives within our student community, spanning Ceramics, Glass, Jewellery, and Interior Design. Utilising traditional and non traditional approaches beyond the confines of technique and genre, each piece offers a glimpse into the artistic and personal journey of its student creator.

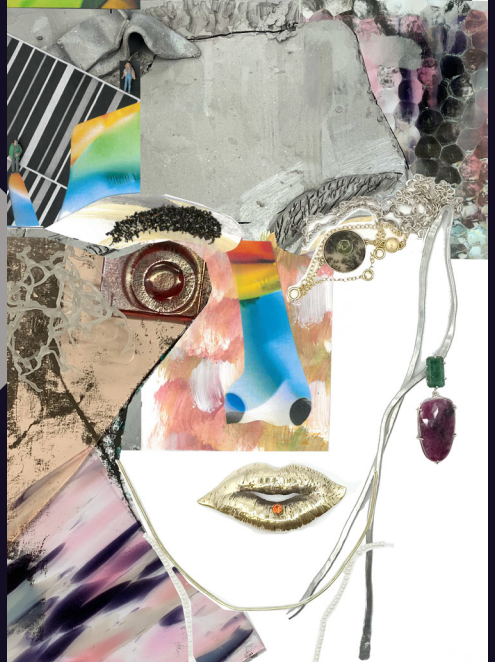
EXHIBITION DATES:

Thursday 20th June –
Friday 28th June 11am–5pm

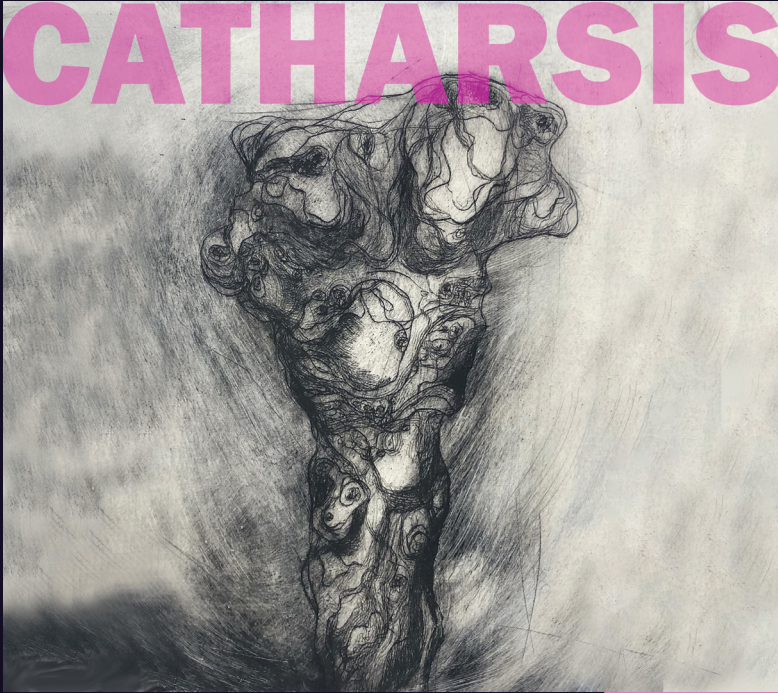
PRIVATE VIEW:

Wednesday 19th June
5pm–7pm

NORTH KENSINGTON CENTRE



CATHARSIS



The exhibition is co-curated by the Chelsea Centre's teaching staff and students. With a passion for collaboration, excitement and playfulness, in this comprehensive exhibition you will find painters working with sound artists, performers linking with musicians and fashion designers collaborating with photographers. Witness our students move between subject areas and carve their own path, giving them the confidence to enter the industry with a unique body of work.

EXHIBITION DATES:

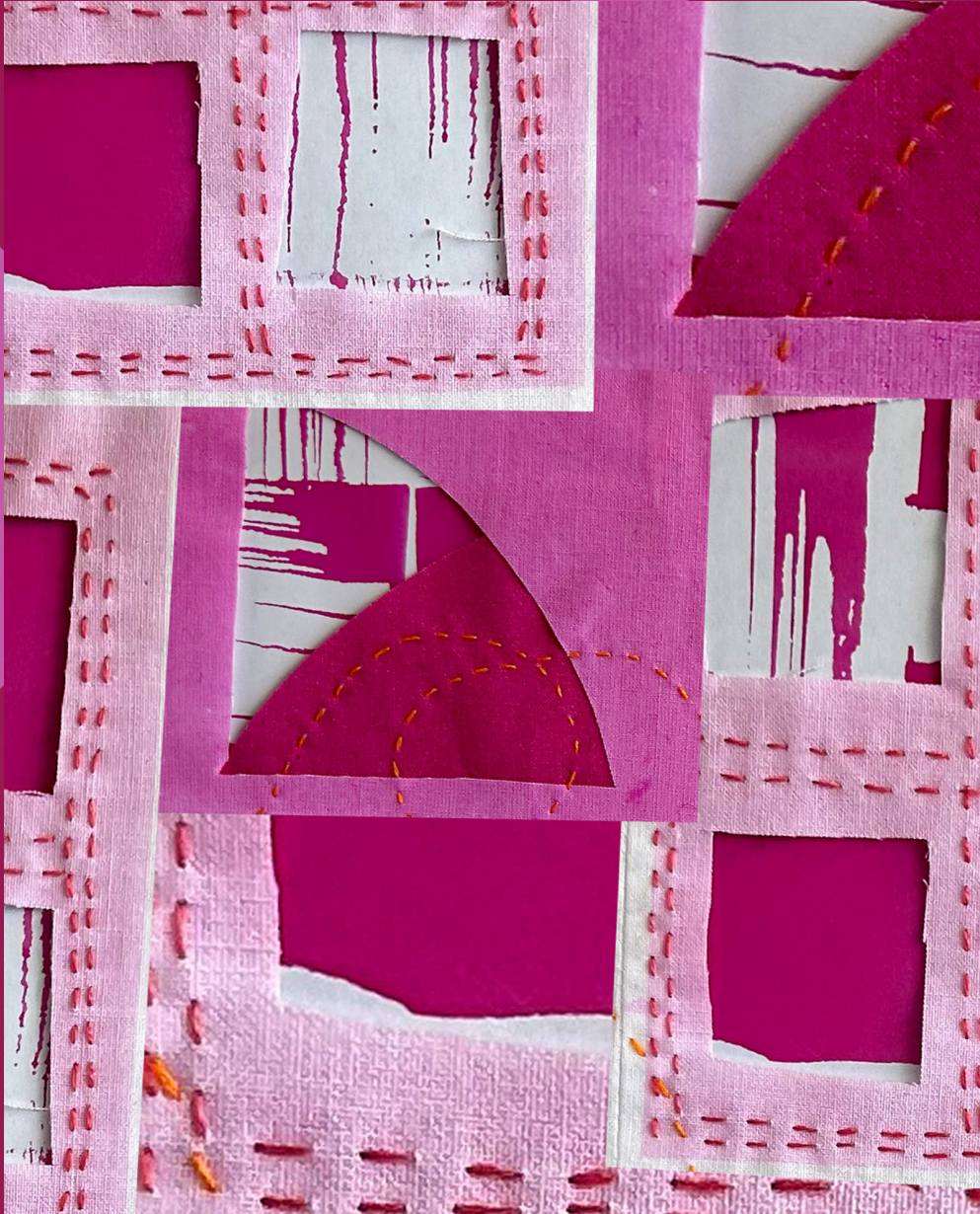
Friday 21st June - Wednesday 26th June 10am-4pm

PRIVATE VIEW:

Thursday 20th June 5pm-8pm

CHELSEA CENTRE

TEXTILES END OF YEA



R SHOW



This exhibition is a showcase of the Textile Foundation students' personal final projects. Each student joins the course with an intention to develop and refine their skill and passion for textiles media. The works on show have been made over the ten week summer term and are a culmination of two terms of learning and making. Students are supported by specialist tutors to follow their own pathway and make works using traditional, contemporary and experimental techniques and processes.

EXHIBITION DATES:

Tuesday 25th June - Saturday 29th June

PRIVATE VIEW:

Tuesday 25th June 6pm-8pm

OPENING HOURS:

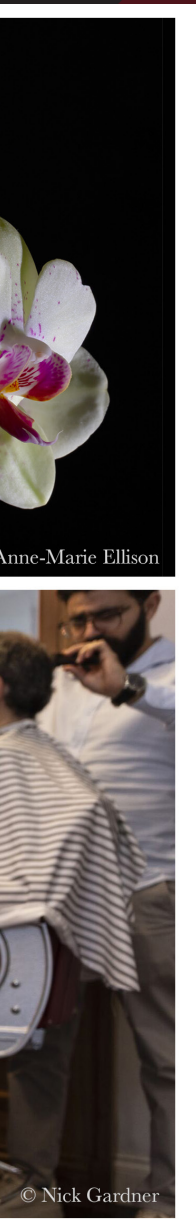
Monday - Friday 12pm-5pm

MORLEY GALLERY

PHOTOLOGY 2024 HIGH PHOTOGRAPHY END OF



ER EDUCATION YEAR SHOW



Anne-Marie Ellison

© Nick Gardner

The show realises the students' determination to navigate both digital and analogue landscapes, bringing fresh perspectives to creative communications. For the first time in Morley's history, five mature students will be graduating with a BA top-up in Photography; their work will be exhibiting among those studying at HNC/HND photography programmes, representing diversity and an abundance of talent.

EXHIBITION DATES:

Tuesday 2nd July – Friday 6th July

PRIVATE VIEW:

Tuesday 2nd July 6pm–8pm

OPENING HOURS:

Monday - Friday 12pm–5pm

MORLEY GALLERY

A HAT JOURNEY AROUND

The Morley Millinery students have once again joined forces with The Culture Trust, Luton, for an extraordinary collaboration that promises to inspire and enchant.

Guided by Yona Lesger, Curator of Significant Collections, Hat Industry & Headwear, students delved deep into the rich tapestry of traditional hats from across the globe. From everyday headpieces to regal ceremonial wear, the Trust's collection provided a boundless well of inspiration for their creative endeavours.

Taught by their lecturers, Vesna Pesic, Rafael Peinador Perez, and Sarah Lomax, these promising milliners embarked on a journey of exploration. Immersing themselves in diverse periods and styles, they researched, experimented with specialist materials, and honed their craft with an unwavering commitment to sustainability. From innovative materials to conscientious processes, their dedication shines through, aligning seamlessly with the evolving landscape of responsible fashion.

From the timeless elegance of bygone eras to the avant-garde visions of tomorrow, this showcase promises a feast for the senses and a journey through the artistry of millinery.

Mark your calendars and join us for an unforgettable experience that celebrates tradition, innovation, and the boundless possibilities of headwear. The Morley Millinery and The Culture Trust collaboration awaits, where every hat tells a story, and every visitor becomes part of the narrative. Don't miss out!

UND THE WORLD

EXHIBITION DATES:

Monday 8th July - Thursday 29th August

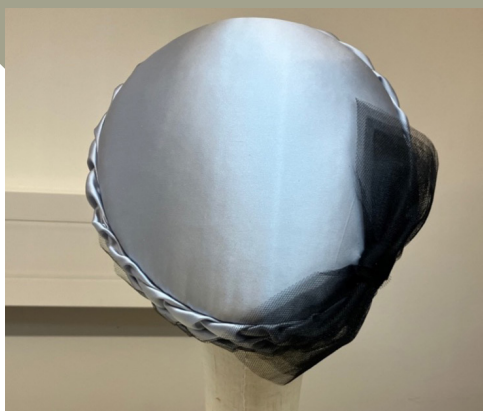
PRIVATE VIEW:

Thursday 4th July 5pm-8pm

OPENING HOURS:

Monday - Friday 5pm-8pm

HAT WORKS, 47 GUILDFORD ST, LUTON LU1 2NQ



UAL FOUNDATION IN AFRICA END OF YEAR SHOW



ART & DESIGN



This show is the culmination of a year's hard work by our Foundation students. Our students benefit from an intensive and structured programme of study in Fine Art Practice which helps generate ideas, develop critical thinking, encourage experimentation and develop research methods. Students also take the opportunity to prepare a portfolio of work for application to higher education or other study pathways.

EXHIBITION DATES:

Tuesday 9th July – Saturday 13th July

PRIVATE VIEW:

Tuesday 9th July 6pm–8pm

OPENING HOURS:

Monday - Friday 12pm–5pm

MORLEY GALLERY

WATERLOO'S FIFTH PL

Morley College Waterloo is delighted to announce the installation of our new "Fifth Plinth" sculpture by long-standing Morley artist Patsy Hickman. Selected by an expert panel and developed over the last year, the sculpture is entitled "Renewal", and is a joyous celebration of the Morley community coming together to celebrate friendship and learning, due to stand at the entrance to the Waterloo Centre for the next three years.



LINTH



TUTOR PROFILE: LYNDA KINNE

Lynda Kinne

Head of School, Visual Arts
Graduated Parson's School of
Design (Fashion), New York

Being an avant garde designer is about taking risks while staying true to who you are. The key to success in fashion is the ability to adapt and creative problem solve. This has formed the foundation of my teaching practice here at Morley. Fashion designers of the future will need to understand how technology, innovation, and materiality intersect to meet the needs of customers while minimising fashion's impact on the environment.



Fashion has an inherent artistic element, bridging the gap between form and function. Throughout my 25 years as a designer working alongside my husband in the label we co-founded, I have realised our brand's bold vision with an innovative approach to pattern cutting and construction. From evening gowns with six sleeves to conjoined jackets requiring two simultaneous wearers, I have honed my skills to craft signature pieces that communicate a creative vision without losing their fundamental purpose: to be worn.

Always future facing, we were early adopters of key fashion industry innovations such as e-Commerce and Pop-Up retail. This allowed us to build a following and foster new types of connections with customers in ways that were previously inaccessible to young designers. Embracing new techniques requires a re-think of linear design systems. This was a key driver in my development of the BA (Hons) Fashion Design, now in its inaugural year at Morley College London. It is designed to deliver the skills that will be relevant for years to come and concurrently drive the change needed for the future. My contributions and signature approach to sustainability, inclusivity, craft, and innovation for the BA (Hons) Fashion Design was awarded Morley's Future Thinker Award in 2023.



TUTOR PROFILE: PETRA BISHAI

Petra Bishai

Petra Bishai has run her own Jewellery design business for over 25 years. Based at Cockpit Studios, her work is defined by a linear style and pared down forms, inspired by her fascination with living in a large city. Her collections explore the paradox of belonging versus alienation and how we adapt and interact with our surroundings.



Petra combines teaching with running her own practice and has taught at several colleges including Kensington and Chelsea College and Middlesex University. Petra currently teaches at Morley College London and WM College. She also runs private classes at K2 Academy. Petra has participated in talks in London and Europe and has conducted workshops and courses for children and adults at the V&A London.



FINE ART MENTORING

Morley Gallery is pleased to present *Slow Looking*, an exhibition by Morley's Fine Art Mentoring Group, led by artist and course director Erika Winstone.

Featuring eleven artists, this exhibition is a curated selection of work made during a sustained 12 month period of development and investigation. Phyllida Barlow stated: "Art has an extraordinary sense of time embedded in it. And it is evidence of a particular time by a particular individual". The works include diverse themes and employ a variety of media including video, sculpture, installation, painting, photography, drawing and printmaking.

Exhibition curator Erika Winstone comments: "The work in this show demonstrates the rich achievements of each artist, as well as the benefits of alternative models of learning and access to a peer group with a wide range of histories and experience. I congratulate each artist on this diverse and exciting exhibition".

The Morley Fine Art Mentoring Group aims to support artists to expand their practice, gaining confidence through forging connections and a sense of community. An important part of the year involves working together to organise a group exhibition.

The Group would like to give special thanks to visiting artists Daniel Howard-Birt, Mark Dean, Matt Hale and Barbara Nicholls for their invaluable contributions. Also, many thanks to Jack Davy, Melissa Baksh and the gallery team, Brendan Murphy, Gunter Herbst and Lynda Kinne for their support.

The artists featured in *Slow Looking*:

Gina Beaton, Siobhan Howatson, Anna Hwang Colligan, Anna King, Emily Kisby, Hugo Knox, Tamsin Loxley, Steve Mathews, Fionn O'Beirne, Marco Piccari and Giulia Zaniol.

EXHIBITION DATES:

Tuesday 3rd September – Friday 6th September

PRIVATE VIEW:

Tuesday 3rd September 5:30–7:30pm

OPENING HOURS:

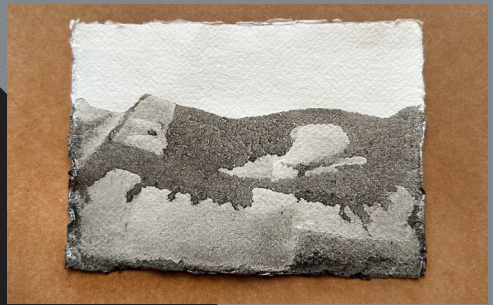
Monday - Friday 12pm–5pm

Saturday 1pm–4pm

ARTIST TALKS:

Saturday 7th September 2:30pm–3:30pm (free)

MORLEY GALLERY



ARTISTS OF MORLEY A



T STOCKWELL



Morley's Stockwell Centre - just a stone's throw from the tube station of the same name - will host its first exhibition in a new Green Hub space during July 2024.

A hub of Morley's community education programme, the Centre has been receiving an upgrade over the past few months, with new areas for showcasing artwork part of the renovation.

Situated in the Centre's Green Hub - a sustainable teaching, work and meeting space for community workshops and learning programmes - in July the gallery will host a small exhibition of selected works which connect with the themes of "sustainability", "community" and "friendship".

Artworks from active students and recent alumni will feature.

Drop into the Stockwell Centre at **1 Studley Road SW4 6RA** to find out more.

The Artists of Morley brings together the fantastic end-of-year activity that our visual arts students lay on for us.

Anchored by a series of end-of-year exhibitions across all three teaching centres, there's plenty of opportunity for you to see what our arts students are capable of.

From intricate ceramics to stylish millinery, delicate jewellery to bold textiles designs, beautiful photography to innovative sound art...you're bound to find something that tickles your artistic taste buds.

Throughout June and July, keep an eye out too on our lively social media channels and website: there you'll find a steady stream of content that showcases Morley's finest artists.

And if you find yourself yearning to develop your own artistic skills, we have hundreds of courses that will allow you to do just that – from Fine Art for 16-18 year olds at Chelsea, to jewellery and glass making classes for adults at North Kensington, to a kaleidoscopic range of evening classes at Waterloo.



To book any of the events listed here, use the QR code on the back cover, or visit the website address below:



WATERLOO CENTRE FOR ADULT EDUCATION

61 Westminster
Bridge Road
London SE1 7HT

NORTH KENSINGTON CENTRE FOR SKILLS

Wornington Road
London W10 5QQ

CHELSEA CENTRE FOR CREATIVE INDUSTRIES

Hortensia Road
London SW10 0QS